



The **Japanese Film Festival** opens in Sydney on 5 November and runs until 15 November 2015.

The **JFF** has grown to be the largest festival of Japanese film outside Japan. A great range of 40 films will be screened in Sydney, a line-up that consists of the very latest films from Japan, released in 2014 and 2015, and a remastered classic.

JFF will also show at Parramatta (Sat 7 | Sun 8 | Fri 13 | Sat 14 | Sun 15 Nov. only).

With so many films coming to Sydney, it might take you some time to choose, so the **JFF** team has divided them into some handy themes to help you choose what to see. Let's look at two genres—Comedy and Soldiers & Samurai.

COMEDY

BAKUMAN | Opening Film

High schooler Moritaka is a gifted illustrator who lacks ambition. Enter Akito, the class genius and talented writer, who convinces Moritaka to join forces and create manga together. Can the pair beat their rival, get the girl and achieve their ultimate goal to become the greatest manga artists of all time?

Year: 2014 Director: Hitoshi OHNE

Princess Jellyfish

Tsukimi, a jellyfish-obsessed *otaku*, and her socially awkward house-mates face eviction. Can Kuranosuke, an extroverted cross-dresser, help them protect their home?



Year: 2015 Director: Taisuke KAWAMURA

Assassination Classroom

Class 3-E gets a new teacher—an enigmatic yellow tentacled monster who reveals that he will destroy the earth if they do not assassinate him before graduation. The rather charismatic monster turns out to be the best teacher they've ever had, yet the mission remains—kill the teacher or face eradication.

Year: 2015 Director: Eichiro HASUMI

ALSO | **Poison Berry in My Brain** and **No Longer Heroine**.

SOLDIERS & SAMURAI

A Samurai Chronicle

A condemned samurai obediently accepts his death sentence, despite scandalous evidence which could save him. Is samurai honour worth more than an innocent life?

Year: 2014 Director: Takashi KOIZUMU

Kakekomi

Kakekomi are runaway women seeking refuge from unhappy marriages in the temple Tokai-ji. It is rumoured that Tokai-ji will grant divorce and freedom from their unwanted husbands after two years of monastic service to the temple. One *kakekomi* develops a forbidden attraction to a young writer. Is there any hope for their future?

Year: 2015 Director: Masato HARADA



cinematographers who worked with Kurosawa on the original film. This remastered version was first screened at Cannes 2015.

Year: 1985 Director: Akira KUROSAWA

ALSO | **The Emperor in August** and **Fires on the Plain**.

RAN

The classic tale by Japanese film legend Akira Kurosawa has been remastered in 4K with the participation of one of the three original

JFF School Screening

Friday 13 November, Sydney only.

This year's special school screening is **Wood Job!** — a coming-of-age film that celebrates the uniqueness of life in rural Japan. City-raised Hirano takes up a rural traineeship after failing to get into university. However, he encounters more than he bargained for, discovering an unfamiliar world of traditional Japanese life, beliefs and rituals.

See website for enquiries and booking details (via Japan Foundation, not the cinema).

JFF CLASSICS

Also, throughout October the Art Gallery of New South Wales has been running the **JFF Classics** program, showcasing the works of Kon ICHIKAWA.



The Makioka Sisters, one of the classic Ichikawa films showing at the AGNSW

The films are free, but ticketed. www.artgallery.nsw.gov.au



2015 Japanese Film Festival

www.japanesefilmfestival.net

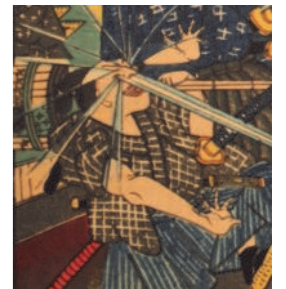
5-15 November Sydney Event Cinemas, George Street

7-8 & 13-15 November Parramatta Event Cinemas, Church Street

Edo Giga

Comical Woodblock Prints from Japan

The ukiyo-e or Japanese woodblock prints best known overseas are arguably Hokusai's images of Mt Fuji or Utamaro's pictures of beautiful women. But there is much more to ukiyo-e. Anyone interested in modern manga should be fascinated by the exhibition of Edo Giga (comical woodblock prints) now on show at the Japan Foundation Gallery. The Edo Giga collection is a selection of important colour woodblock prints within the history of manga.



Edo mischief making



'Shogun's Road at Shitaya' From the series *Comical Views of Famous Places in Edo* Utagawa Hirokage Kyoto International Manga Museum

This is the second part of the charming Edo Giga exhibition presented by Japan Foundation Sydney in cooperation with the **Kyoto International Manga Museum** and **International Manga Research Centre** (the museum is well worth a visit should you go to Kyoto).

A talk and workshop series **Lines on Paper: Demystifying Woodblock Prints and Manga** is being held in conjunction with the exhibition. Still to come are the talk **Reading Fashion in Ukiyo-e** on 30 October and a workshop **Tricks of the Trade: Lines and Shade in Manga** on 2 November.

Both the exhibition and related events are free. For more details and event bookings (essential), see—

www.jpf.org.au

13 October to 2 November 2015

The Japan Foundation Gallery Level 4, Central Park, Broadway (opposite UTS)

Get ready for Matsuri in Sydney!



Matsuri in Sydney is an annual Japanese festival celebrating Japanese culture and cross cultural friendship. First held in 2006, Matsuri in Sydney has become Sydney's biggest Japanese event. Last year more than 25,000 people came to enjoy the fun of the festival.

The 2015 Matsuri in Sydney will feature all the festival favourites. Taste Japan at **food stalls**. Try your hand at **traditional arts and crafts** at workshop booths demonstrating activities such as origami and calligraphy. Marvel at performances of **martial arts** such karate and *kenbu* ('sword dance'). Enjoy **music and dance** performances, from the dynamism of Japanese taiko drumming to the rhythm of traditional festival dances. The ever-popular **Cosplay contest** returns and is a great way for audience members to get involved. Events are still being added to the program.

The Matsuri in Sydney is a fun-day out for the family and anyone curious to experience a little of Japan in Sydney.

For more details of the 2015 Matsuri in Sydney, visit the website!

NOTE: Due to the redevelopment of Tumbalong Park, Matsuri in Sydney will take place at Palm Grove in Darling Harbour. Palm Grove is along the edge of Cockle Bay. See the Matsuri in Sydney website for a map.

Palm Grove Darling Harbour

Saturday 7 November 2015

11am to 7pm

www.matsurisydney.com

